

AUTOMATED ROBOT LOADING SYSTEM FOR TORIDAS



AUTOMATED CHICKEN WHOLE LEG LOADING

Automatic detection of chicken leg ankle position, front or back orientation.

Automatic detection of chicken whole leg ankle position using image processing technology.

Robot arms handle whole chicken legs by the ankle. Can be set up to load legs into either a single Toridas machine, or into an Auto-loader system which can load legs onto multiple Toridas machines at once.

Patent Pending

MAYEKAWA
MYCOM

AUTOMATED ROBOT LOADING SYSTEM FOR TORIDAS

FEATURES

1. Optimum layout based on processing capacity

Multi-axis robot arms can be arranged to create an optimized layout based on required processing capacity (between 1,000 - 6,000 legs/hour).

2. Stabilized production speed

Image processing performed at a constant frequency allows loading of legs into Toridas machines without lowering production efficiency.

3. Highly hygienic operation

Highly hygienic operation can be achieved as there is no human contact in the loading procedure.

PROCESSING IMAGE - OUTER DIMENSIONS

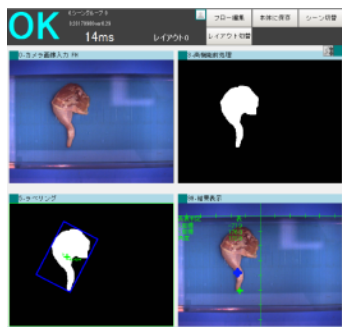
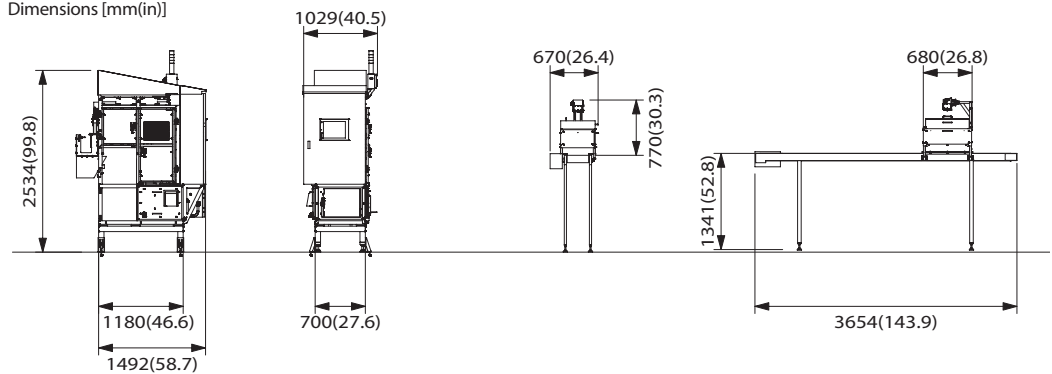


Image processing examples

Dimensions [mm(in)]



Automated loading machine

Image process unit conveyor

SPECIFICATIONS

Capacity	2,000 legs / hour (with 1 robot) maximum 6,000 legs / hour (with 3 robots)		
Model	Specification of Robot made in Japan	MRS—M0	
	Specification of Robot made in France	MRS—S0	
Applicable raw materials	Chicken whole leg (250 ~ 550g or 0.55 ~ 1.21lbs/leg)		
Standard dimensions	Stand for robot	1,492mm(L)×700(W)×2,534mm(H) [58.7in(L) × 27.6in(W) × 99.8in(H)]	
	Imaging device	680mm(L)×670mm(W)×770mm(H) [26.8in(L) × 26.4in(W) × 30.3in(H)]	
Weight	800kg (1763.7lbs)		
Utility	Electricity	3φ 200 ~ 220V	3kW
	Water supply	0.15MPa (21.8PSI)	1ℓ / min (XX CFM)
	Compressed air	0.6MPa (87PSI)	40ℓ/min (0.5 CFM)

MAYEKAWA
MYCOM

The information on this brochure is subject to change without notice.

MAYEKAWA MFG.CO.,LTD.

3-14-15,Botan,Koto-ku,Tokyo 135-8482, JAPAN Tel.(81)-3-3642-8181 Fax.(81)-3-3643-7094

Robot & Engineering Division

Tel.(81)-3-3642-8966 Fax.(81)-3-3642-8271

<http://www.mayekawa.com>