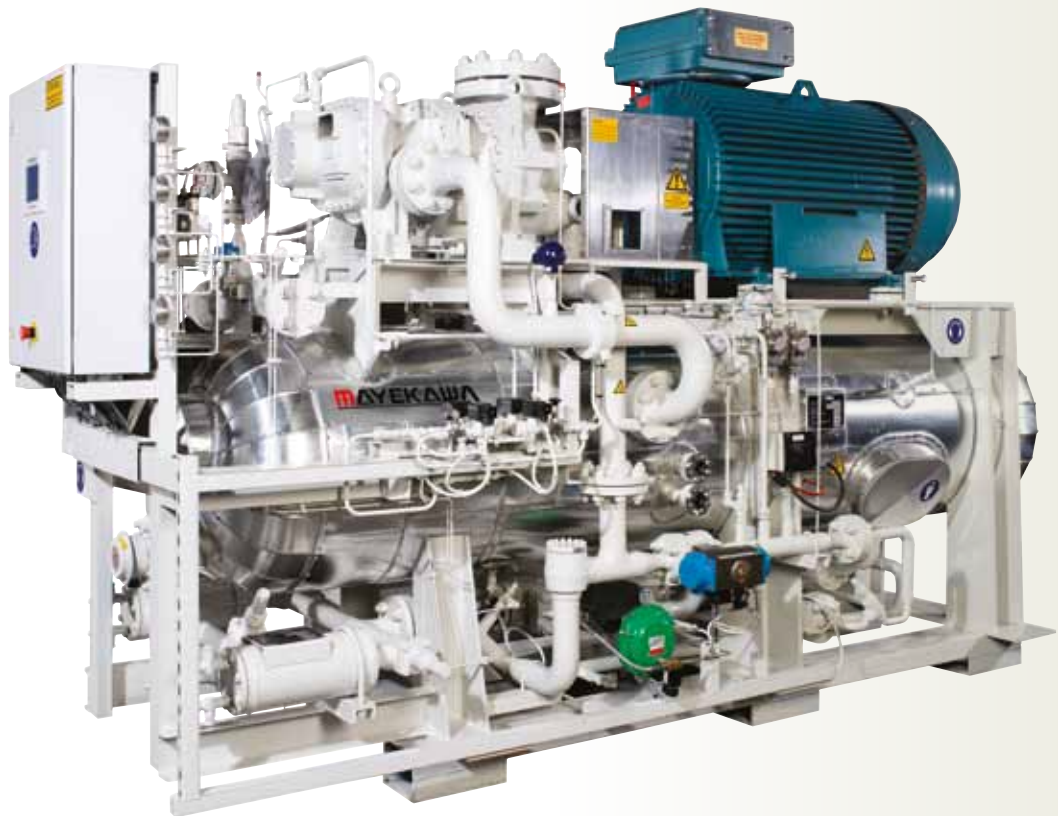




HIGH PRESSURE SCREW COMPRESSOR

# GH-Series

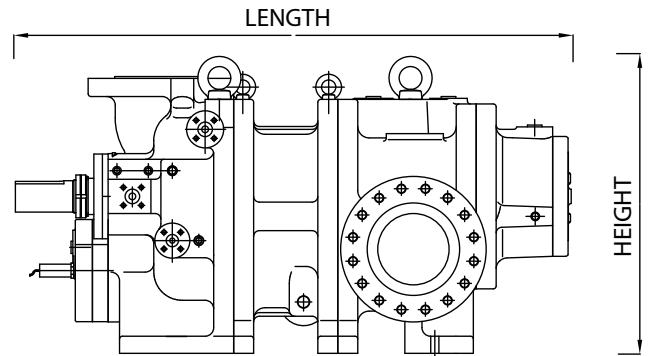
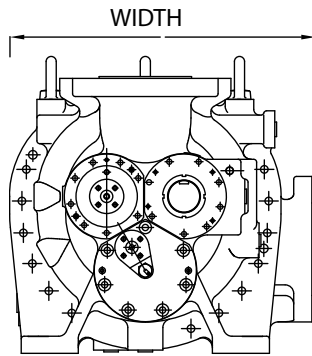


### The GH-series

is a series of oil injection type screw compressors capable of running continuously at a discharge pressure of 50 barG. By employing a special rotor profile the GH-series enables a highly efficient operation. The GH-series compressors are designed for various gases: Hydrocarbons, Helium, Hydrogen, CO<sub>2</sub>, NH<sub>3</sub> and others. Therefore these compressors are ideal for such applications as high pressure fuel gas supply to gas turbines, low temperature freezing systems on CO<sub>2</sub> with a defrost cycle, ammonia heat pumps, etc.

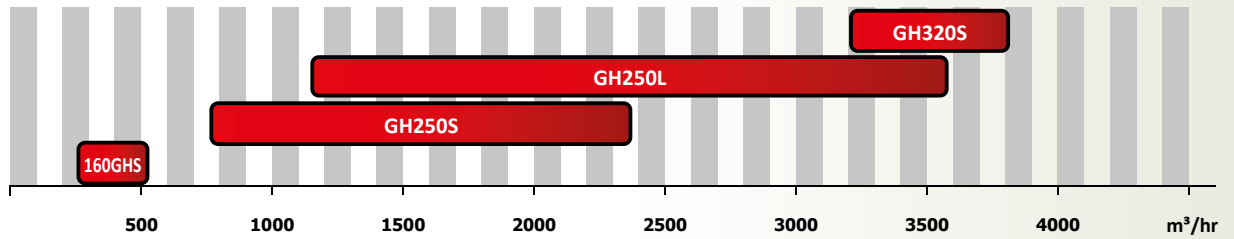
In the GH-series compressors we are using forged steel for the rotors and tilting pads for the thrust bearings<sup>1)</sup>, which results in longer maintenance intervals and, consequently, lower running costs. The GH-series compressors are compliant with API619, EN-378 ATEX, NACE and other standards and are being successfully applied in a great number of fields.

1) Excluded 160GHS



UNIT TYPE	WEIGHT (kg)	WIDTH (mm)	LENGTH (mm)	HEIGHT (mm)
160GHS	570	510	1021	510
GH250S	2250	785	1568	680
GH250L	2410	785	1711	680
GH320S	5000	1095	1938	970

Swept Volume  
V<sub>th</sub>



Item		Unit	Description			
Model			160GHS-V	GH250S	GH250L	GH320S
Handling Gas			CO <sub>2</sub> , NH <sub>3</sub>	CO <sub>2</sub> , Hydrocarbon, Helium, Hydrogen and other gases		
Design Running Condition	Maximum Suction Pressure	BarG	20	20	20	30
	Maximum Discharge Pressure	BarG	45	50	37	50
	Minimum Suction Gas Temperature	°C	-55	30		
	Maximum Discharge Gas Temperature	°C	100°C for setting rotor clearance			
Design Condition	Design Pressure of Casing	BarG	60			
	"Maximum Allowable Working Pressure"	BarG	50 <sup>1)</sup>	50		
	"Maximum Allowable Suction Pressure"	BarG	20 (start up: 25)	20	20	30
	Minimum Allowable Suction Pressure	BarG	5			
	Minimum Pressure Differential Between Suction and Discharge	BarG	9	12		5
	Maximum Allowable Discharge Temperature	°C	100			
	Maximum Drive Shaft Speed	rpm	3600	4500	4500	3600
	Minimum Drive Shaft Speed	rpm	1800	1450	1450	2950
Compressor Data	Rotor Profile	-	MYCOM Original			
	Numbre of lobes / Male Rotor	-	5			
	Numbre of lobes / Female Rotor	-	7			
	Vi Control Range	-	1.8, 4.6	2.3, 3.3, 4.5	1,3	1.3, 2.3, 3.3, 4.5

1). 50 BarG operation is limited to 20% of the total operating range.

•The table above is subject to change without notice..

### WORLDWIDE

- 40 countries / 127 offices
- 8 production plants



## MAYEKAWA EMEA Organization

### ABU DHABI

Ali & Sons Business Center Office No. 201  
Ali Khalfan Rashed Al Mutawa Al Dhahiri Bldg.  
Plot no 29, Al Ain Road, Umm Al Nar  
Tel. +971 2 5102151  
Fax +971 2 5102571

### BULGARIA

Kamen Andreev Str. 24, 1303 Sofia  
Tel. +359 2 8910130  
Fax +359 2 8910131

### DUBAI

P.O. Box 61349, W-HOUSE  
No. RA-08-UC05  
Jebel Ali Free Zone Dubai, UAE  
Tel. +971 4 8886363  
Fax +971 4 8886373

### EGYPT

New Cairo, 5th Settlement  
North 90th St.  
The 47th Building  
Tel. +20 22 5062925  
Fax +20 22 5032901

### FRANCE (representative agent) Siège social

8, rue des Fontenelles  
44140 Le Bignon  
Tel. +33 1 30 582600  
Fax +33 1 30 581937  
<http://www.mayekawa.eu/fr>  
E-mail: [mayekawa.france@mayekawa.eu](mailto:mayekawa.france@mayekawa.eu)  
**South East Branch Office  
Refrigerant Division**  
Rue François Coli - Bâtiment H  
33290 Blanquefort  
Tel. +33 1 30 582600

### West Branch Office Food Processing Division

20, Rue Ampère  
22590 Pordic  
Tel. +33 1 30589795  
Fax +33 1 30581937

### GERMANY Mayekawa Deutschland GmbH

Zum Buckesch 7a  
48336 Sassenberg-Füchtorf  
Tel. +49 (0) 5426 9059224

### Vertrieb BRD/Österreich

Tel. +49 151 42628055  
<http://www.mayekawa.de>  
Email: [info@mayekawa.de](mailto:info@mayekawa.de)

### HUNGARY

Köbányai út 10/A  
2049 Diósd,  
Tel. +36 23 545712  
Fax +36 23 545715  
<http://www.mayekawa.eu>  
E-mail: [hungary@mayekawa.eu](mailto:hungary@mayekawa.eu)

### ITALY Milan Office

Via Riccardo Lombardi 19/12  
20153 Milano  
Tel. +39 2 48929218  
Fax +39 2 4531728

### Bologna Office

Via Pradazzo 7 40012  
Calerara di Reno  
Tel. +39 51 726364  
Fax +39 51 726804

### MOROCCO

6, Allée des Cyprès  
20250 Casablanca  
Tel. +212 600 041241

### POLAND

ul. Druskiennicka 8/10  
60-476 Poznan  
Tel. +48 61 8420738  
Fax +48 61 8485837

### RUSSIA Moscow Office

Polkovaya St, House 1, bldg 1  
127018 Moscow  
Tel. +7 499 2300176 / 78  
Fax +7 499 2302112  
<http://www.mayekawa.ru>  
E-mail: [info@mayekawa.ru](mailto:info@mayekawa.ru)

### Vladivostok Office

Tigrovaya st., 30, office 22  
690091, Vladivostok  
Tel: + 7 423 279-1503

### SOUTH AFRICA

West End  
Unit 3 Prime Park  
Printers Way  
Montague Gardens 7441  
Tel. +27 21 5511434  
Fax +27 86 5463618

### SPAIN

Calle Montevideo 5, Nave 13  
Pol. Industrial Camporosso  
28806 Alcala de Henares, Madrid  
Tel. +34 91 8300392  
Fax +34 91 8300397  
<http://www.mayekawa.es>  
E-mail: [mayekawa@mayekawa.es](mailto:mayekawa@mayekawa.es)

### SWITZERLAND

Rosenbergstrasse 31  
6300 Zug  
Tel. +41 41 7268626  
Fax +41 41 7268620  
<http://www.mayekawa.ch>  
E-mail: [info@mayekawa.ch](mailto:info@mayekawa.ch)

### TURKEY

Dünya Ticaret Merkezi  
A/2 Blok Kat: 10 No. 325  
Yeşilköy  
Istanbul  
Tel. +90 212 46536 31- 34  
Fax +90 212 4653635

### UKRAINE

Goloseevskaya Street 7  
Office 122-123  
03039 Kiev  
Tel. +38 44 2514662

### UNITED KINGDOM

16 Oakhurst Gardens  
DA7 5JP Bexleyheath, Kent  
Tel. +44 1322 433558  
Fax +44 1322 433164

### Japan Head Office

3-14-15 Botan Koto-ku  
Tokyo 135 8482, JAPAN  
Tel. 81 3 3642 8181  
Fax 81 3 3643 7094  
E-mail [e-public@mayekawa.co.jp](mailto:e-public@mayekawa.co.jp)

### MAYEKAWA Europe nv/sa

Leuvensesteenweg 605  
1930 Zaventem - Belgium  
Tel. +32 2 7579075  
Fax +32 2 7579023  
<http://www.mayekawa.eu>  
E-mail [info@mayekawa.eu](mailto:info@mayekawa.eu)

